



Products & Solutions from Deloitte AI Institute (HK)

Deloitte AI Institute (Hong Kong)

Apr 2025

Information Classification: Confidential



Introduction

Deloitte Generative AI Practice

High quality talent at scale

Global AI, Analytics & Reasoning	37k+
Semantic Reasoning & Inference	385+
Natural Learning Techniques	665+
Conversational AI	730+
Prompt Engineers	1200+

Experience working with GenAI ecosystem



Consistent global recognition as a leader in the AI Space



IDC MarketScape

Deloitte named a **leader** in the [Worldwide AI Services 2023](#) Vendor Assessment by IDC – 3 times in a row



Gartner

Deloitte named a **global leader** for the [8th time in Data and Analytics](#) (including AI) Service Providers Worldwide – 2022

Alliances with leading GenAI tech players

NVIDIA | Deloitte

• NVIDIA's **"Global Consulting Partner of the year"**...for three consecutive years

Google | Deloitte

• Google Cloud's **Global Service Partner of the Year**...for four consecutive years

Scaled in-house services driving innovation

AI Institute and Trustworthy AI

Conducting **cutting-edge research** and eminence and helping clients **deliver responsible and trusted AI solutions**

SFL Scientific
a Deloitte business

Acquisition of award-winning, **US-based Ph.D. team of AI experts**

Hashedin

Software Engineering services that drive transformation, innovation, and growth

Deloitte Center for AI Computing

Accelerate the development of **innovative artificial intelligence (AI)** solutions for Deloitte clients

Comprehensive GenAI capabilities



Generative AI Strategy



Generative AI Labs



Generative AI COE & Governance



LLM Ops / LLM as a Service



Prompt Engineering



POC Delivery



GenAI Foundry

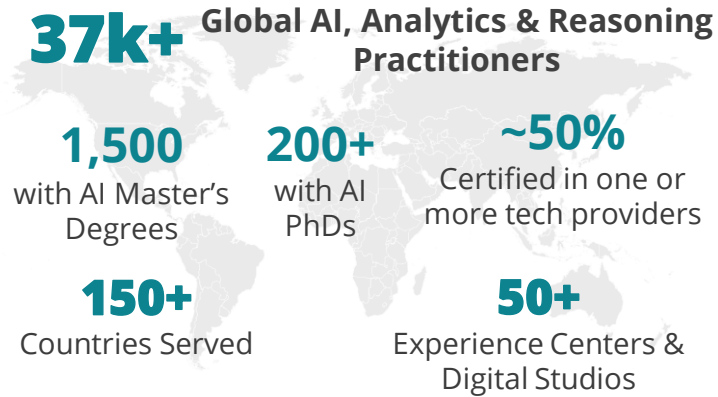


Fine Tuning

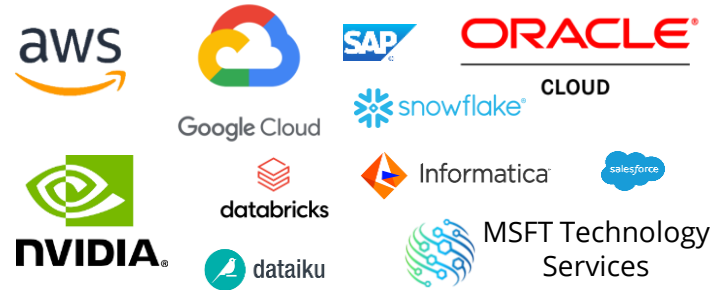
Deloitte as an Artificial Intelligence leader

We are a recognized global leader in AI, leveraging our end-to-end capabilities, relationships & sector / domain expertise developed over decades.

Dedicated practitioners at global scale

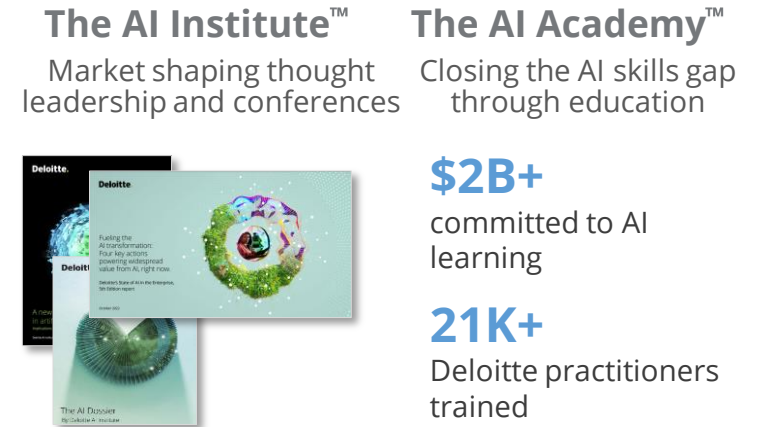


Wide range of partners across the ecosystem



Since 2021, Deloitte has received 89+ innovation awards across the Industry

AI investments made for more than a decade



End-to-end capabilities and 450+ proprietary assets

- AI COE & Op Model Design
- AI-Enabled Audit Reporting
- AI Engineering & Advanced Analytics
- AI Misuse Detection & Remediation
- Autonomous Business Transformation
- Business Intelligence & Visualization
- Cloud Migration
- Controls Development & Assessment
- Data Ingestion, Validation, Processing & Transformation
- Digital Twins & Simulation
- ...and more

Sector-specific solutions built with trust



Help clients deliver sustainable, safe, ethical and responsible AI solutions across **21** sectors through our **Trustworthy AI™ Framework**

Multi-year recognition as a Global Leader



Deloitte AI Institute

德勤人工智能研究院

Harmoniously integrated into the global AI ecosystem, we establish deep local roots to meticulously craft bespoke services that cater to our clients' distinct requirements.

Deloitte AI Institute (DAI), a component of Deloitte **Digital Difference**, is dedicated to infusing digital into Deloitte China's AI Strategy. As the core force in Deloitte China's AI and data application field, the DAI not only focuses on key business areas such as risk management, strategic planning, corporate governance, talent strategy, and technology application, but also actively promotes cooperation with Deloitte's global AI network. This enhances the integration of AI technology and further explores "Age of With" in the empowerment era.

In the field of artificial intelligence (AI), we are committed to:



Deloitte AI Institute

德勤人工智能研究院

Industries

Consumer Goods

Energy, Resources & Industrials

Government & Public Services

Life Science and Health

Financial Services

Technology, Media and Telecom

Automobile

Competencies

Deep learning

Natural Language Process

Computer vision

Knowledge graph

Recommender system

Experience

100+

Studied LLM

20+

Deployed LLM

Professional team

40+

Data / AI Scientists
and Engineers – 40%
Ph.D. (ML & HK)

100+

Industrial reports and
white papers

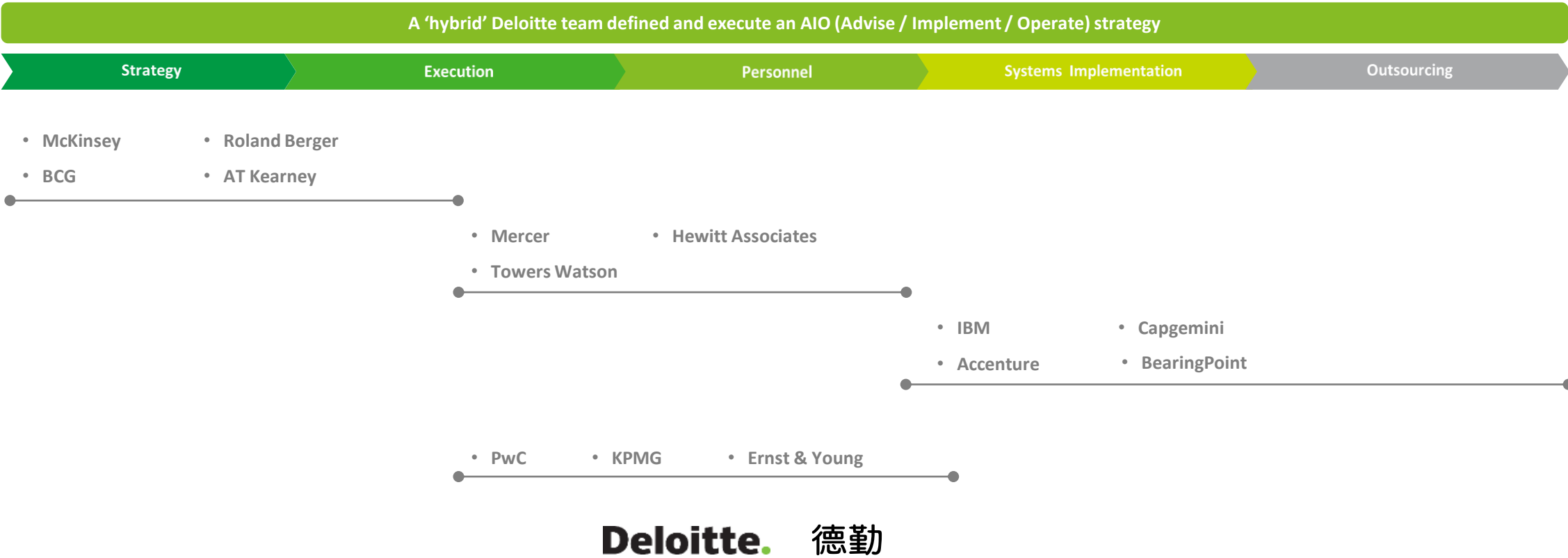
20+

Global ecosystem
partners



Deloitte End-to-End Service Capability

As a trusted advisor and transformation journey partner, Deloitte provides integrated solutions throughout the strategic design, implementation and operate lifecycle, through continuous “A-I-O” capabilities enhancement and cross-functional collaboration.



With the most comprehensive consulting solutions and end-to-end service capabilities, Deloitte provides clients with integrated solutions from strategic planning to system operation.

Our Products & Solutions

Sapitor in Windows

Empower individual with offline LLM-RAG chatbot

A personal multi-document AI assistant

Personalized Off-internet Multi-document AI Assistant



Laptop with / without GPU

LLM-RAG chatbot

With chat histories

Documents stored in vector database

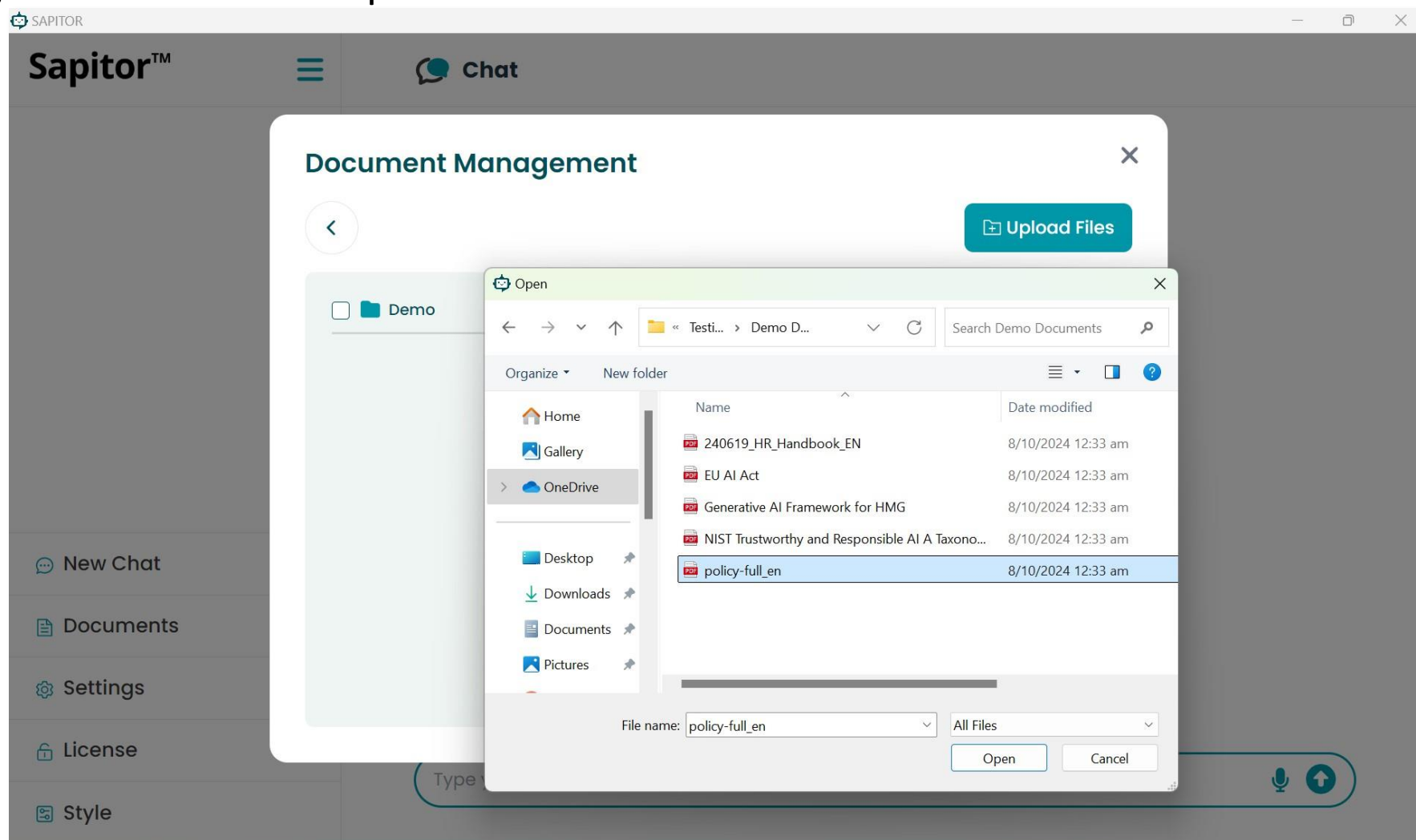
Completely off-internet usable

Speech to text (STT) function –
Auto detect 5 languages (English,
Mandarin, Cantonese, Japanese,
Korean).

Can change LLM models

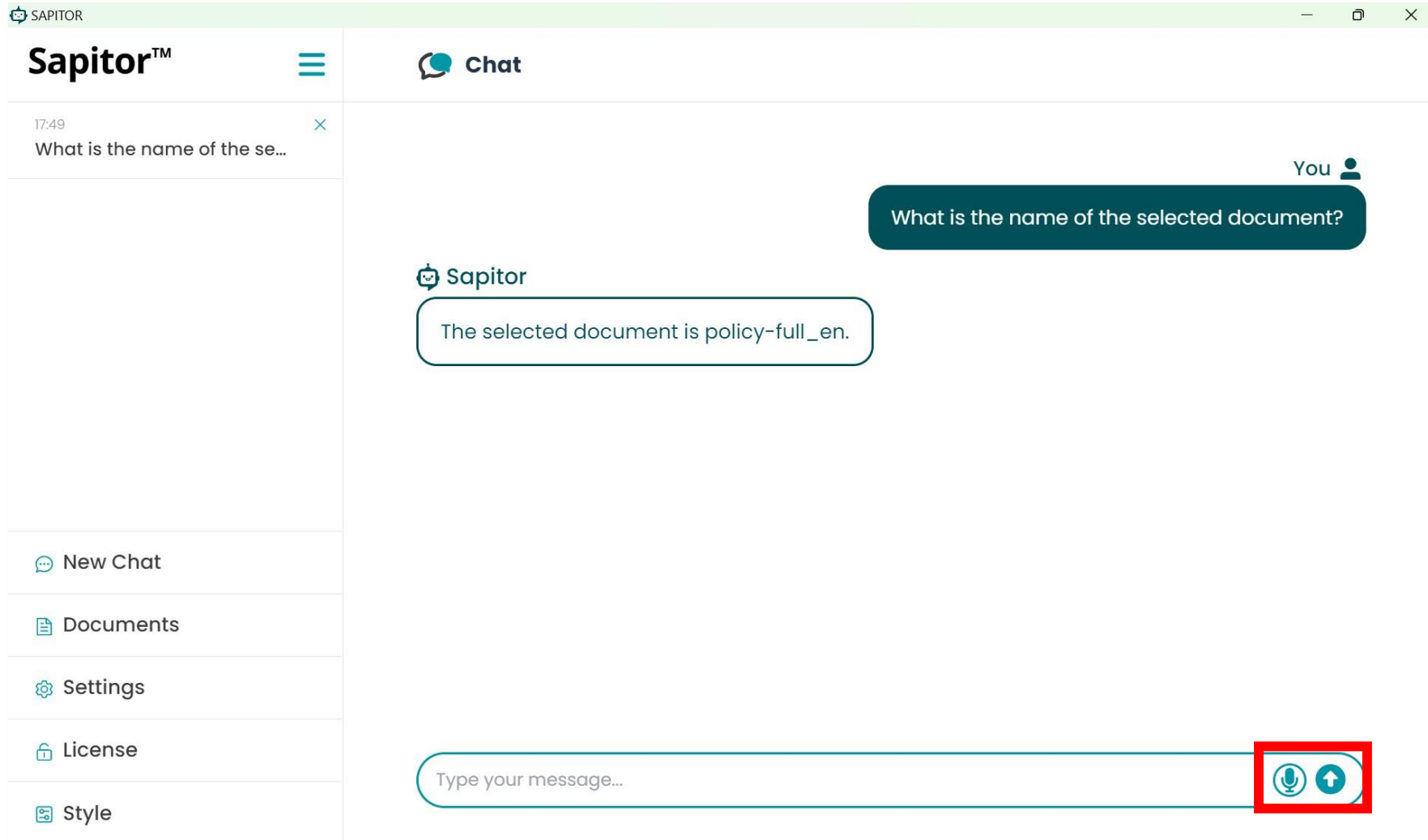
Personalized Off-internet Multi-document AI Assistant

Users can upload documents by clicking button “Upload Files” firstly. Then, users can select the document(s) and click button “Open”.



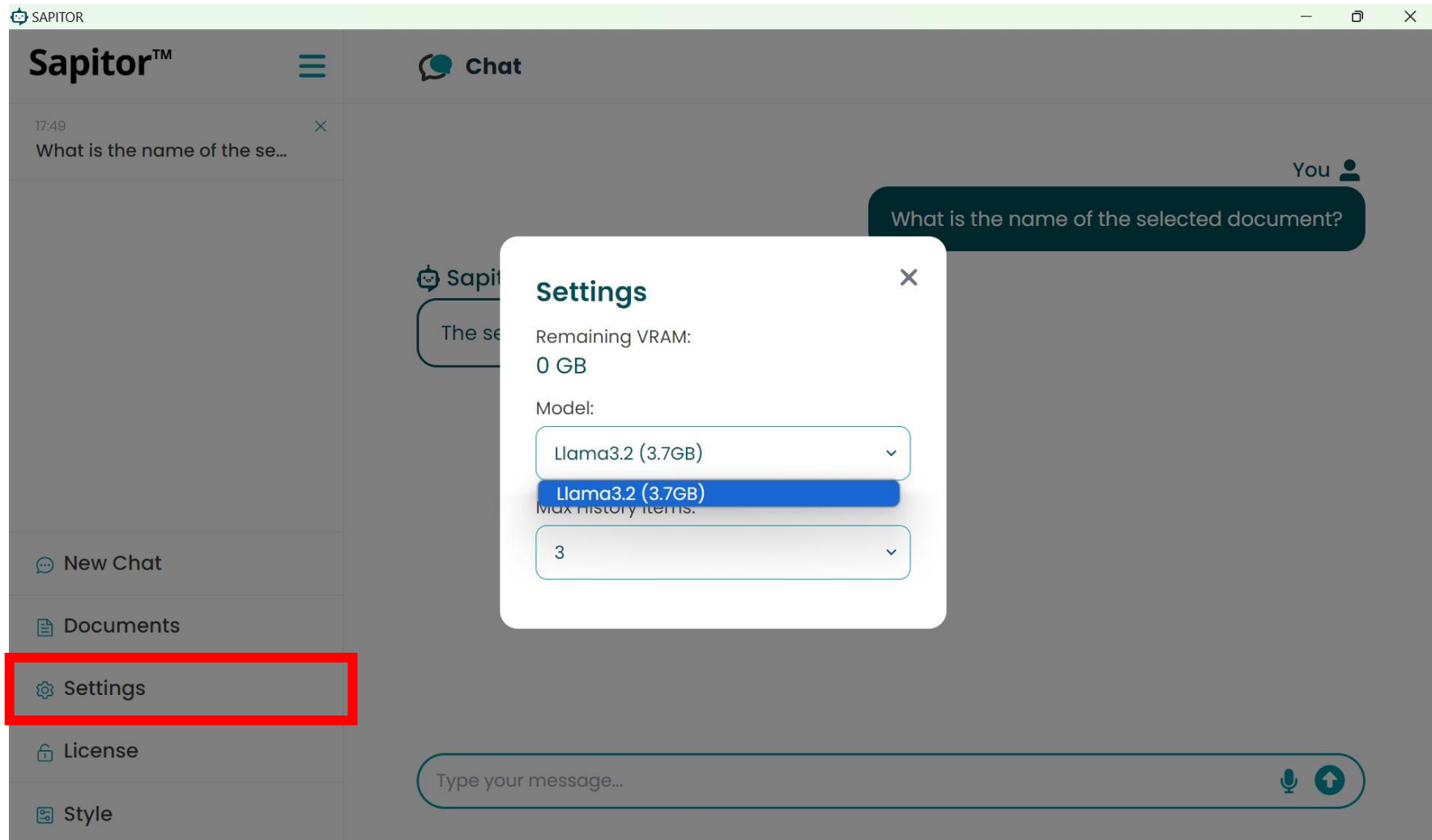
Personalized Off-internet Multi-document AI Assistant

Users can also click the “Mic” button to activate the speech to text (STT) function – Cantonese, Mandarin, English, Japanese, Korean for recording the user’s voice and converting to texts.



Personalized Off-internet AI Assistant

Users can change the LLM models by clicking button “Settings”.



Solution Availability on Hardware

Laptops without GPU

E.g. ThinkPad X1 Carbon Gen 13 Aura Edition



Min. requirements:

1. **CPU:** Intel® Core™ Ultra 7 or above
2. **RAM:** 32GB or above
3. **HHD / SSD:** 10GB

Laptops with GPU (preferred)

E.g. ThinkPad P16 Gen 2 (with RTX 4090)



Min. requirements:

1. **CPU:** 11th Gen Intel® Core™ i7 or above
2. **GPU:** RTX 4070 or above (at least VRAM 12 GB)
3. **RAM:** 32GB or above
4. **HHD / SSD:** 20GB



德勤

EXTERNAL



About Deloitte

Deloitte China provides integrated professional services, with our long-term commitment to be a leading contributor to China’s reform, opening-up and economic development. We are a globally connected firm with deep roots locally, owned by our partners in China. With over 20,000 professionals across 31 Chinese cities, we provide our clients with a one-stop shop offering world-leading audit, tax and consulting services.

We serve with integrity, uphold quality and strive to innovate. With our professional excellence, insight across industries, and intelligent technology solutions, we help clients and partners from many sectors seize opportunities, tackle challenges and attain world-class, high-quality development goals.

The Deloitte brand originated in 1845, and its name in Chinese (德勤) denotes integrity, diligence and excellence. Deloitte's global professional network of member firms now spans more than 150 countries and territories. Through our mission to make an impact that matters, we help reinforce public trust in capital markets, enable clients to transform and thrive, empower talents to be future-ready, and lead the way toward a stronger economy, a more equitable society and a sustainable world.

Deloitte refers to one or more of Deloitte Touche Tohmatsu Limited (“DTTL”), its global network of member firms, and their related entities (collectively, the “Deloitte organization”). DTTL (also referred to as “Deloitte Global”) and each of its member firms and related entities are legally separate and independent entities, which cannot obligate or bind each other in respect of third parties. DTTL and each DTTL member firm and related entity is liable only for its own acts and omissions, and not those of each other. DTTL does not provide services to clients. Please see www.deloitte.com/about to learn more.

Deloitte Asia Pacific Limited is a company limited by guarantee and a member firm of DTTL. Members of Deloitte Asia Pacific Limited and their related entities, each of which is a separate and independent legal entity, provide services from more than 100 cities across the region, including Auckland, Bangkok, Beijing, Bengaluru, Hanoi, Hong Kong, Jakarta, Kuala Lumpur, Manila, Melbourne, Mumbai, New Delhi, Osaka, Seoul, Shanghai, Singapore, Sydney, Taipei and Tokyo.

This communication contains general information only, and none of DTTL, its global network of member firms or their related entities is, by means of this communication, rendering professional advice or services. Before making any decision or taking any action that may affect your finances or your business, you should consult a qualified professional adviser.

No representations, warranties or undertakings (express or implied) are given as to the accuracy or completeness of the information in this communication, and none of DTTL, its member firms, related entities, employees or agents shall be liable or responsible for any loss or damage whatsoever arising directly or indirectly in connection with any person relying on this communication.

© 2025. For information, contact Deloitte China.